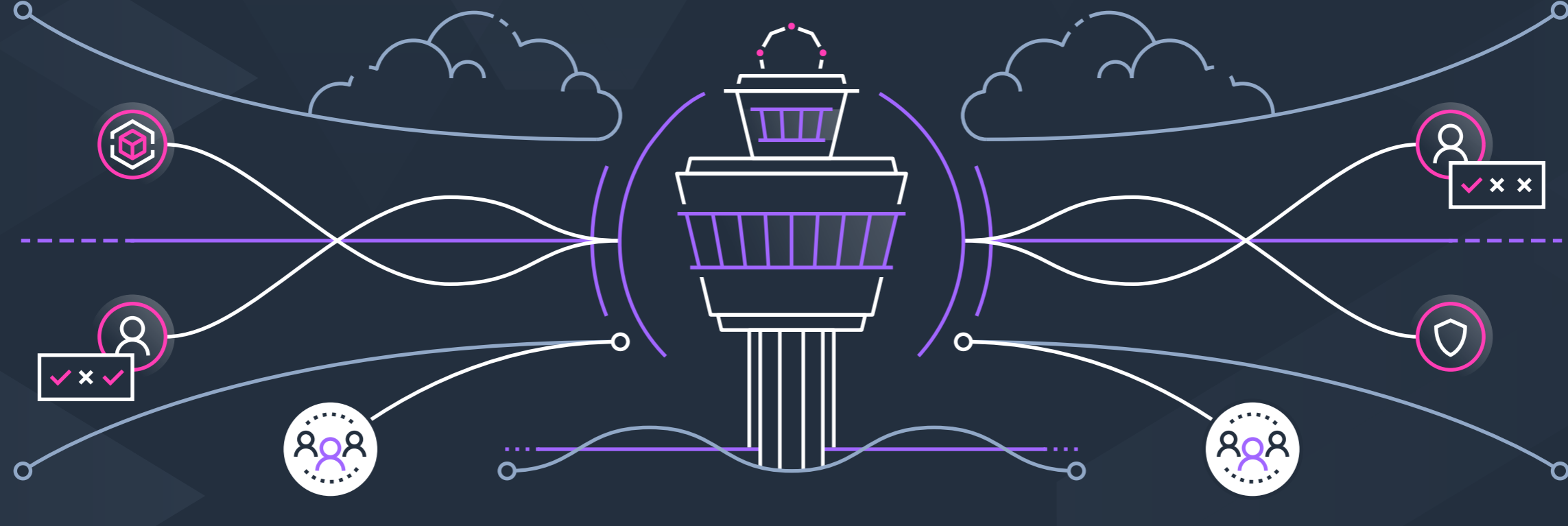


Cloud Setup and Governance with AWS Control Tower



Cloud setup and governance can be complex for enterprises. AWS Control Tower provides the easiest way to set up and govern a multi-account AWS environment based on best practices. It automates setup of a secure landing zone for you to provision new accounts, enforce policies for security and compliance, and get continuous visibility into essential information on accounts and organizational units.

Simplify Setup with Control Tower Blueprints

AWS Control Tower uses multiple AWS services beneath the surface, abstracting away the complexity of working with individual AWS services.

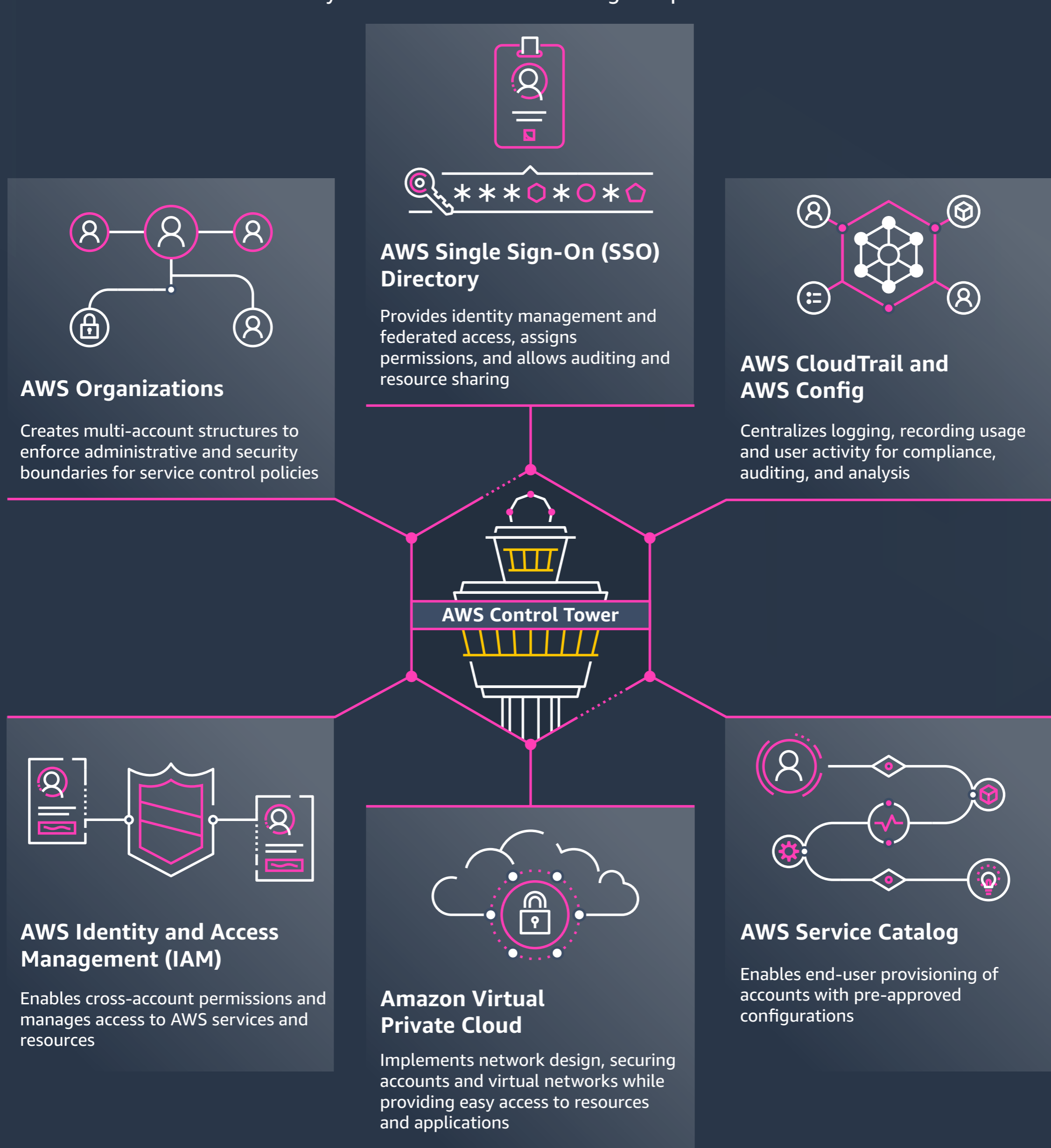


AWS Control Tower completes optimized setup in about 1 hour

Save weeks of manual setup and tweaking

Look beneath the surface of AWS Control Tower

Control Tower uses multiple AWS services to automatically set up your AWS environment using blueprints.



Account factory standardizes account configuration

Control Tower helps automate your organization's account provisioning workflow, creating a built-in account factory to standardize accounts with baseline settings.



Configure your account factory with pre-approved network design and region selections



Enable self-service for end-users to configure and provision accounts using AWS Service Catalog

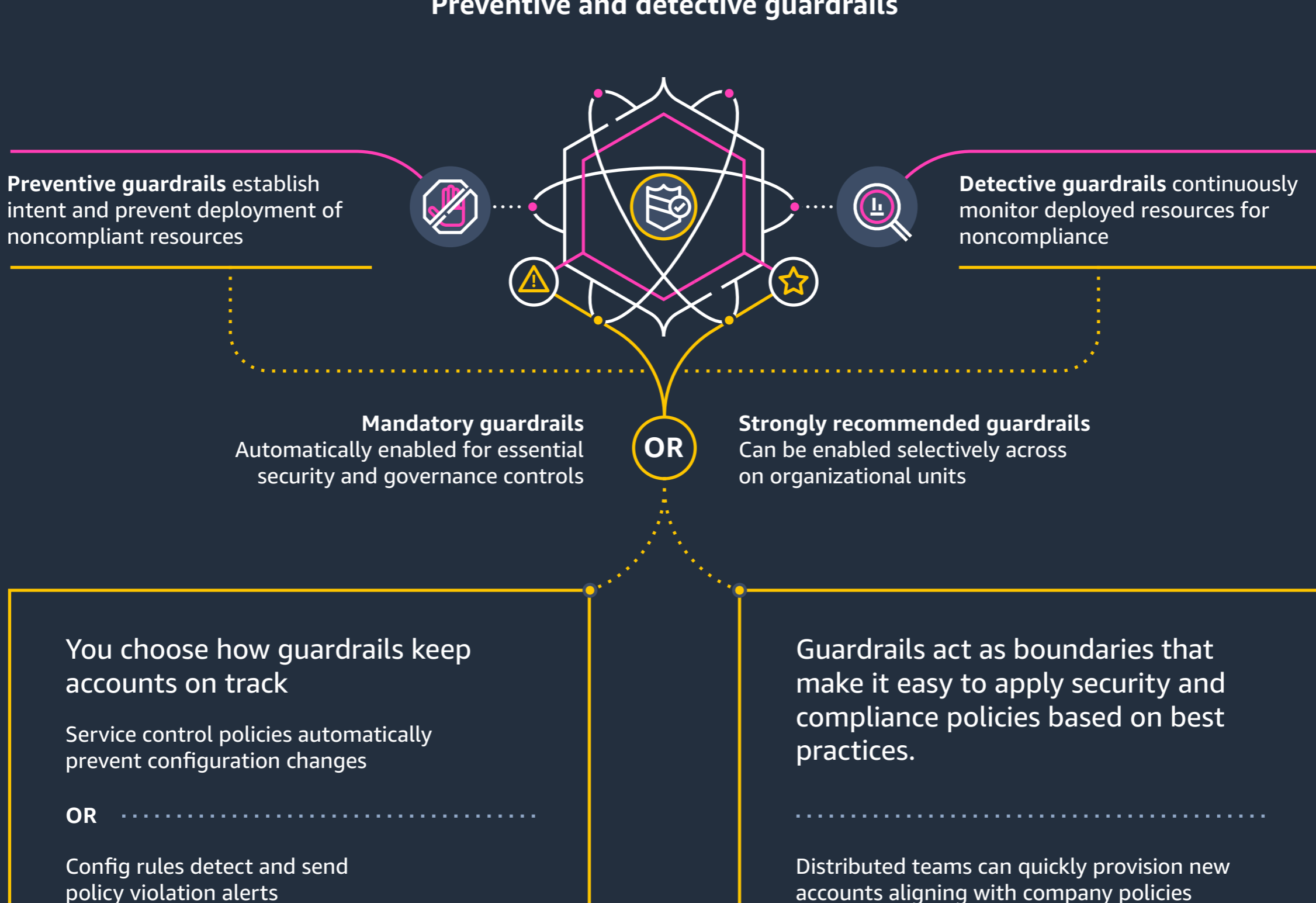
AWS blueprints implement curated best practices for setup, based on insights established by working with thousands of organizations.



Enforce Compliance and Security with Control Tower Guardrails

Control Tower guardrails provide ongoing governance over your AWS workloads, automatically monitoring and enforcing security, operations, and compliance policies across accounts. Choose which high-level guardrails to implement, and Control Tower automatically translates them into granular policies.

Preventive and detective guardrails



You choose how guardrails keep accounts on track

Service control policies automatically prevent configuration changes

OR

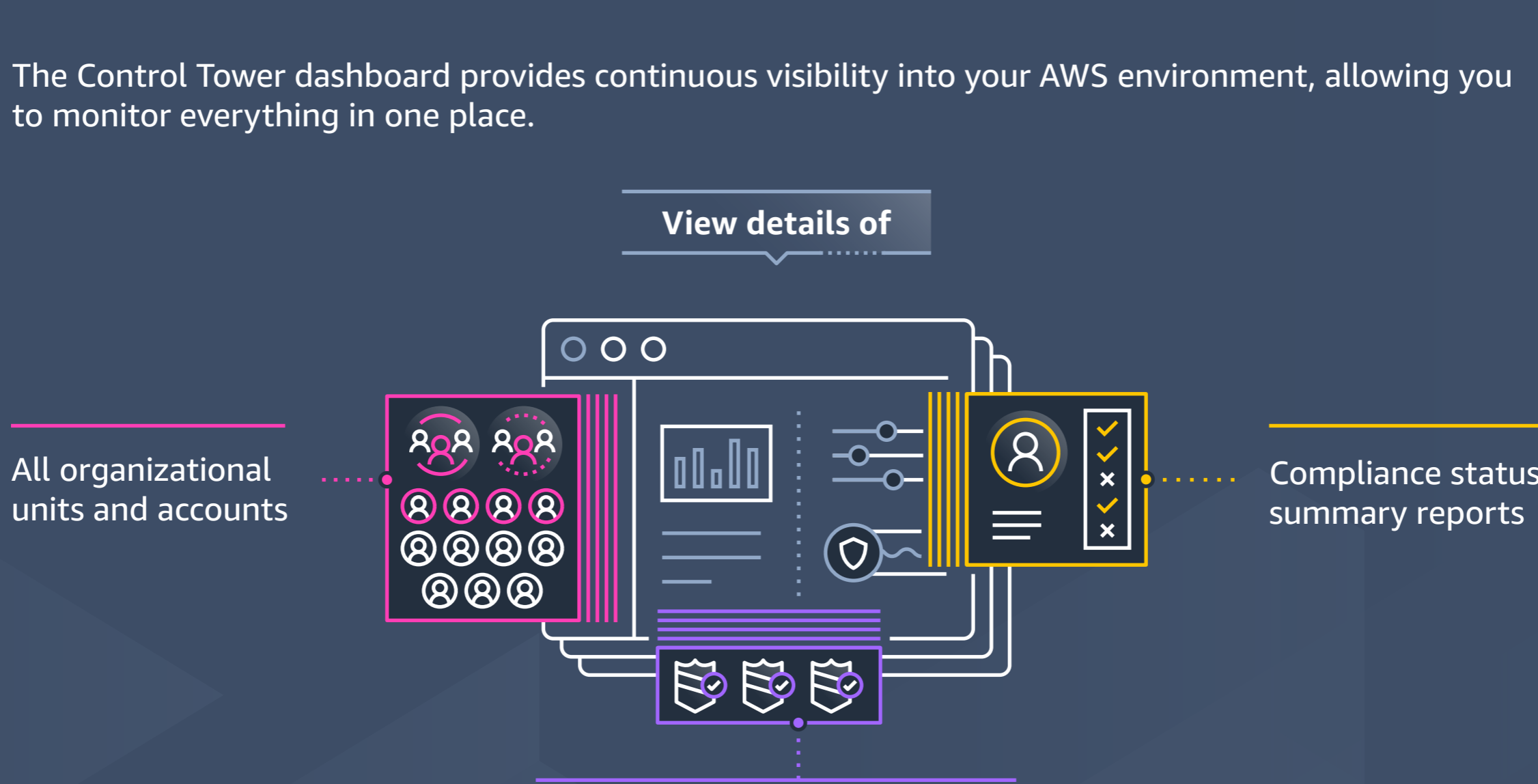
Config rules detect and send policy violation alerts

Guardrails act as boundaries that make it easy to apply security and compliance policies based on best practices.

Distributed teams can quickly provision new accounts aligning with company policies

Continuous Visibility with Control Tower Dashboard

The Control Tower dashboard provides continuous visibility into your AWS environment, allowing you to monitor everything in one place.



Gain control over your cloud environment and equip your development teams with speed and agility, with the power of AWS Control Tower.

[Learn more about AWS Control Tower](#)